

Directions to Marty & Jake's in Genesee Valley (530) 284-6745

From the South (or Chico)

It is best to take Highway 70 thru the scenic Feather River Canyon, towards Quincy. From Chico, you can get over to Hwy. 70 by cutting over on Hwy. 99 (south) on Pentz Rd. east towards Butte College. If you don't know this route, take Hwy. 149 from Hwy. 99 to Hwy. 70. You should FILL UP your GAS TANK as you won't be passing any operating gas stations between Chico and our place. We are located about 2 hours from Chico (or Oroville) barring delays from road construction, forest fires, slow RV's, low-elevation snowstorms, lions, tigers, & bears (Oh, my!) About one hour (65 miles) from Oroville, past the teeny "no-services"/seasonal communities of Storrie, Belden, Twain, Virgilia, and Paxton, LOOK FOR THE MAJOR, WELL-SIGNED TURNOFF (ON YOUR LEFT) FOR HIGHWAY 89 NORTH, toward Greenville and Chester/Lake Almanor. If you miss this turnoff, you'll arrive in Quincy in 10 more miles! If coming from Quincy, you'll be heading west on Highway 70 towards Oroville and turning right on Highway 89.

Follow Highway 89 northward along plunging Indian Creek for 5.5 miles, then it levels off as it enters expansive Indian Valley.

* Make a right turn at well-signed Arlington Road/A-22, toward Taylorsville. (If you get to Crescent Mills, you missed this turnoff by about a mile!) Take Arlington Rd. over the railroad tracks, then a fast five miles to Taylorsville, watching for animals on the road. At Taylorsville (there is good small general store from circa 1860 open until 5 or 6 pm, NO gas), SET YOUR ODOMETER, then continue straight, past the rodeo grounds and campground. Travel thru the woods along scenic Indian Creek for about 6 more miles, where gorgeous Genesee Valley's meadows will open up before you.

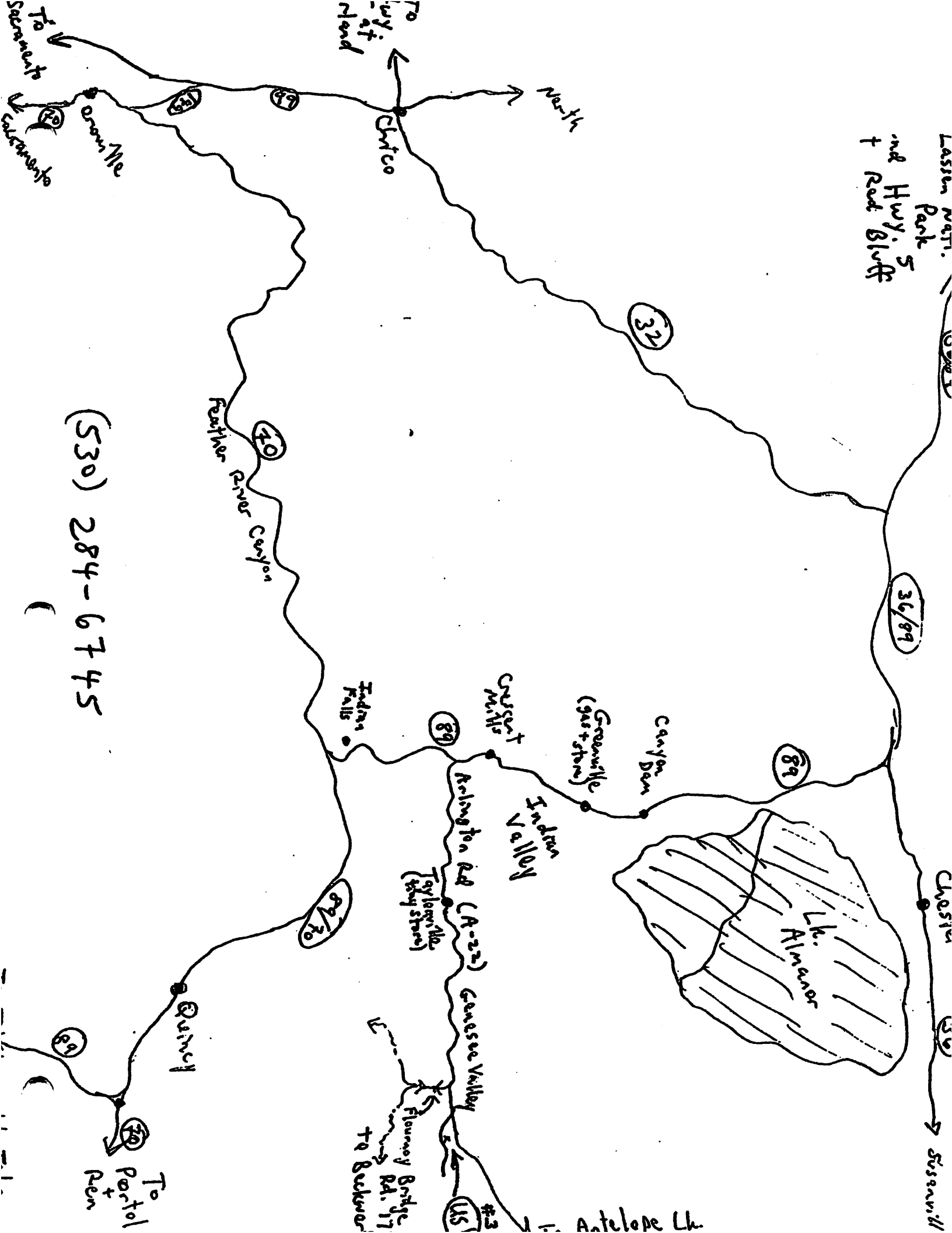
If it's open, you may want to wet your whistle at the historic Genesee Store, located on the left, across the street from the brick house. Continue another 4 miles pass the Genesee Store (or 10.5 miles from Taylorsville), where you'll pass (on the right) the turnoff for the "Flournoy Bridge" (see sign indicating 31 miles to "Beckwourth" and the other sign indicating it as Natl. Forest Road #177). Don't go across the bridge; keep going about a quarter mile further, immediately after the sign reading "Antelope Lake 11 miles, make a right on an paved, dead-end road veering to the right ("Genesee-Indian Creek Road").

We are the second driveway on the left-hand side (#349, see the green mailbox) NOTE: You will see the garage and the house is farther up the driveway and not easily visible. Turn and drive on up. You can pull up to the house to unload and then relocate your vehicle in another location on the property. We will help.

If you are in need of substantial supplies, the closest town with gas/supermarket/hardware is Greenville, on Hwy. 89, north of Crescent Mills, and about 30 minutes from our place! There is a good small, old (1860!) general store in "downtown" Taylorsville, open until 5 or 6 pm, right along your route. Come prepared for the season!

From the North:

If traveling from the North, it is fastest to take all-weather Highway 36 eastward from Interstate 5 in Red Bluff for about an hour, almost to Chester/Lake Almanor, then take Highway 89 southward (a right turn). Follow thru Greenville (LAST GAS & supermarket) and Crescent Mills. Just a minute so south of Crescent Mills, turn eastward (left) at Arlington Rd./A-22. Now follow the directions listed above under "directions from the south" beginning at the *.



(530) 284-6745